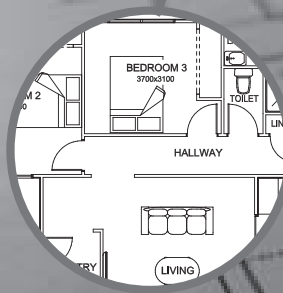
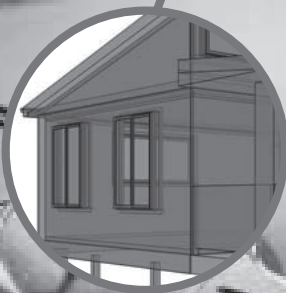




# STATEWIDE

constructions



## Home Floor Plans and Layouts

[www.statewideconstructions.com.au](http://www.statewideconstructions.com.au)

# Statewide Constructions

Statewide Constructions is based in Hobart.  
Our company has a well earned reputation for supplying a high quality product at a very affordable price.

## We are manufacturers of:

Flat Pack Homes - pre-built and ready to assemble to lock up.

## Flat Pack Home Prices Include:

- Fully engineered signed plans for submission to Council
- Delivery to your building site on mainland Tasmania
- Steel floor framing system
- Sheet flooring with glues and fixings
- Prefabricated steel framed external and internal walls
- Roof battens
- Ceiling battens
- Corrugated wall cladding
- Corrugated roof cladding
- Fascia, gutter and all flashings (excluding curved)
- Sisalation to walls and roof
- Aluminium sliding windows and doors.

## Flat Pack Homes Floor Insulation

To insulate floors, your home can be either clad to the ground or, install trays to hold insulation.  
Insulations trays - POA. Additional framing to clad to ground is quoted individually as it is site specific

*All prices quoted include GST. Statewide Constructions reserve the right to change floor plans, designs and prices without notice. The information contained in this publication is intended to give fair description of our products, it does not constitute an offer by the manufacturer, nor does the manufacturer warrant its accuracy or completeness in describing the various products.*

For more information please visit our website: [www.statewideconstructions.com.au](http://www.statewideconstructions.com.au)

# Contents

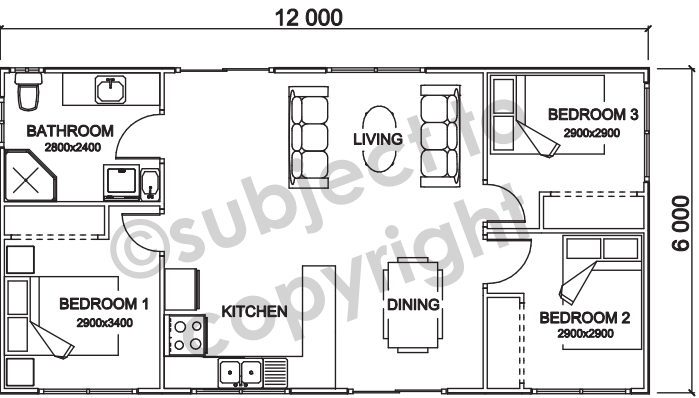
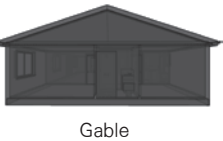
## Single Storey Homes

Tyenna	3
Tyenna Option	3
Esperance	4
Esperance Option	4
Macquarie	5
Macquarie Option	5
Huon	6
George	6
Derwent	7
Gawler	7
Dennison S1	8
Dennison S2	8
Dennison S3	9
Mersy S1	9
Mersy S2	10
Mersy S3	10
The Esk	11
Challenger 1	12
Gemini	12
Challenger 2	13
Challenger 3	14
Endeavour	15
Pioneer	15
Apollo	16
Explorer	16

## Double Storey Homes

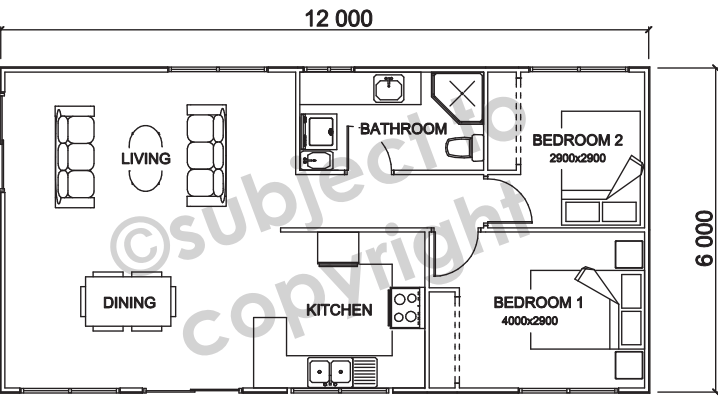
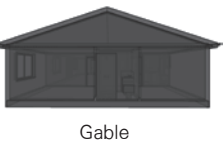
Forester	17
Forester Option	18
Forester Extended	19
Prosser	20
Prosser Option	21
Prosser Extended	22
Horton	23
Horton Extended	24
Rubicon	25
Dennison D1	26
Dennison D2	27
Dennison D3	28
Mersy D1	29
Mersy D2	30
Mersy D3	31

## Tyenna Single Storey 6000mm x 12000mm (72m<sup>2</sup> or 8 squares) home.



Available in Flat Pack

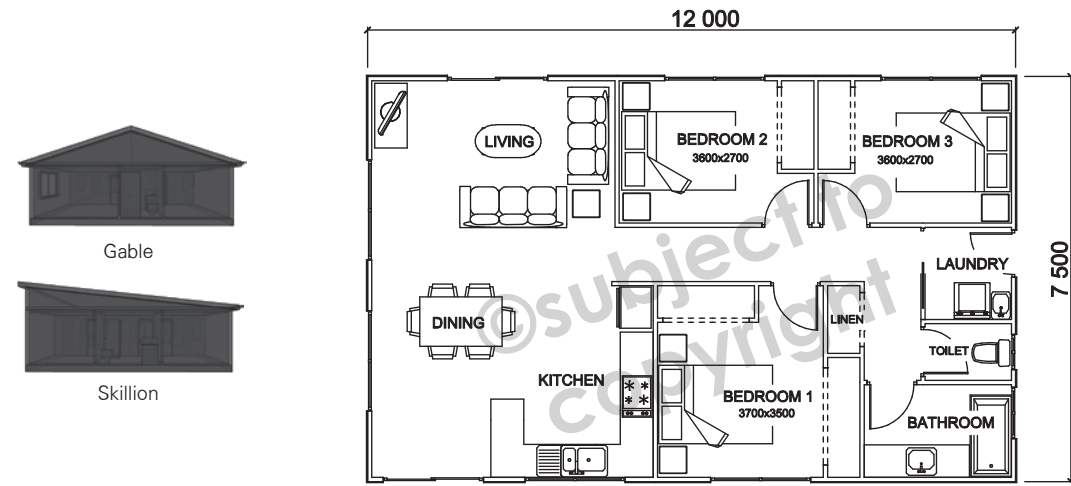
## Tyenna Option Single Storey 6000mm x 12000mm (72m<sup>2</sup> or 8 squares) home.



Available in Flat Pack

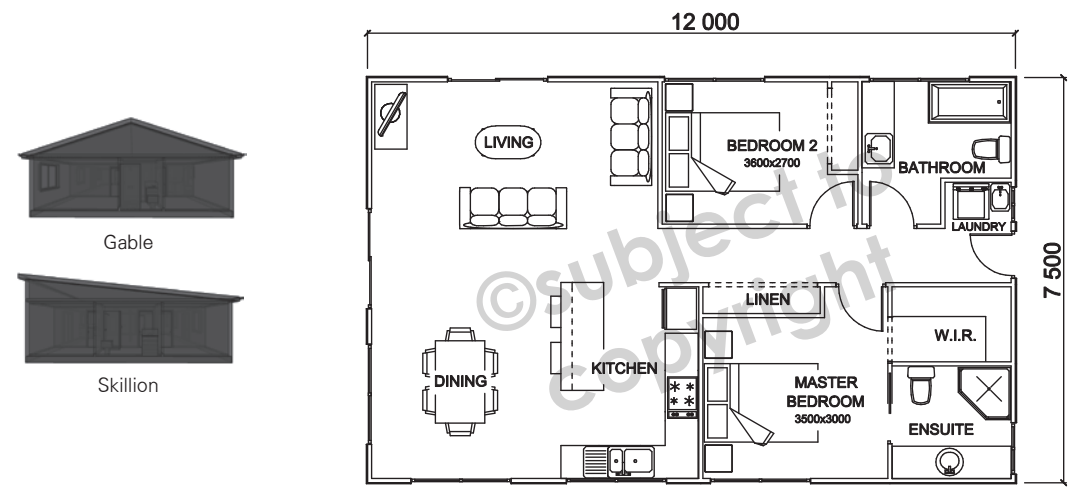


**Esperance** Single Storey 7500mm x 12000mm (90m<sup>2</sup> or 10 squares) home.



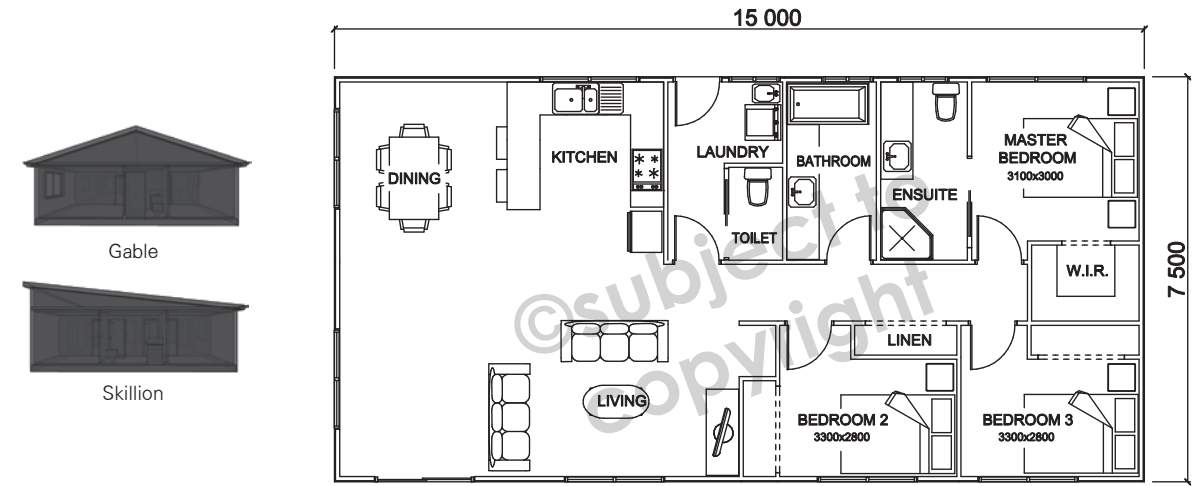
Available in Flat Pack

**Esperance Option** Single Storey 7500mm x 12000mm (90m<sup>2</sup> or 10 squares) home.



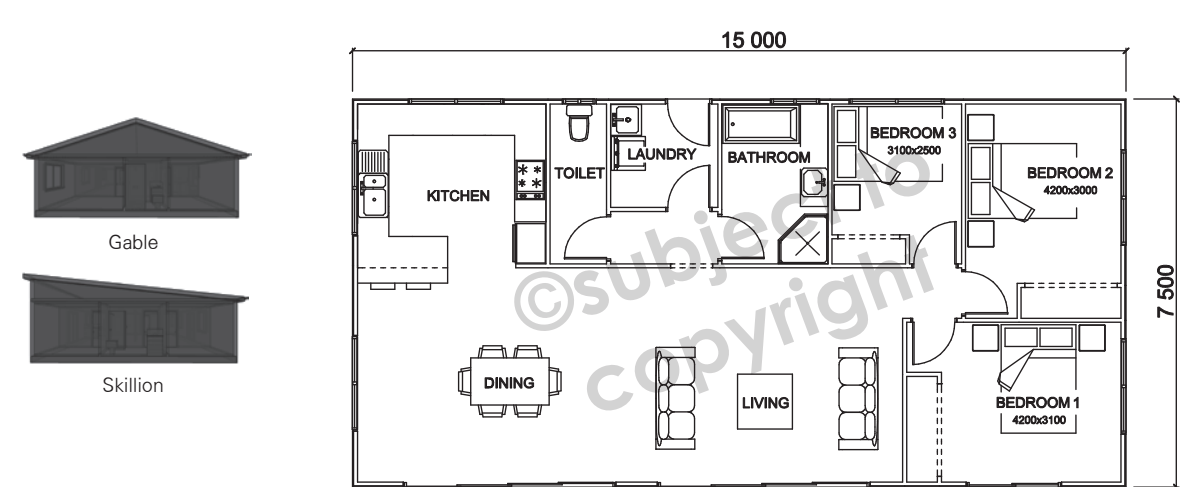
Available in Flat Pack

**Macquarie** Single Storey 7500mm x 15000mm (112.5m<sup>2</sup> or 12 squares) home.




Available in Flat Pack

**Macquarie Option** Single Storey 7500mm x 15000mm (112.5m<sup>2</sup> or 12 squares) home.




Available in Flat Pack

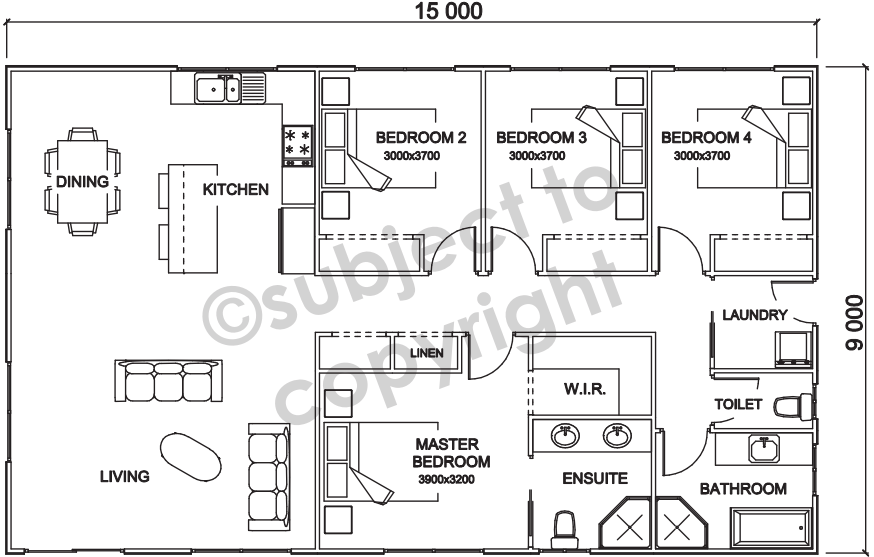
**Huon** Single Storey 9000mm x 15000mm (135m<sup>2</sup> or 14.5 squares) home.



Gable




Skillion




Available in Flat Pack

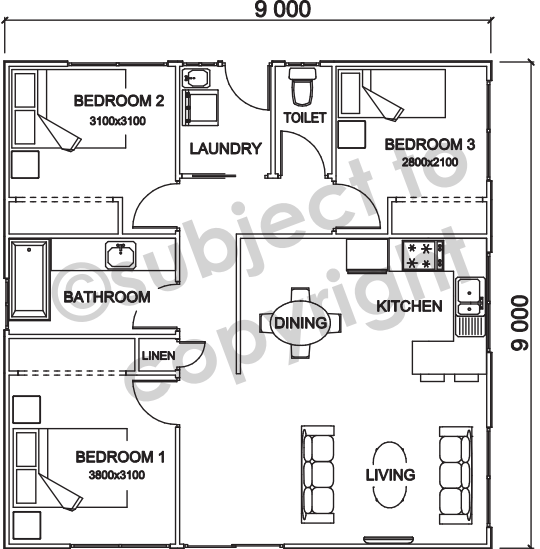
**George** Single Storey 9000mm x 9000mm (81m<sup>2</sup> or 9 squares) home.



Gable




Skillion




Available in Flat Pack

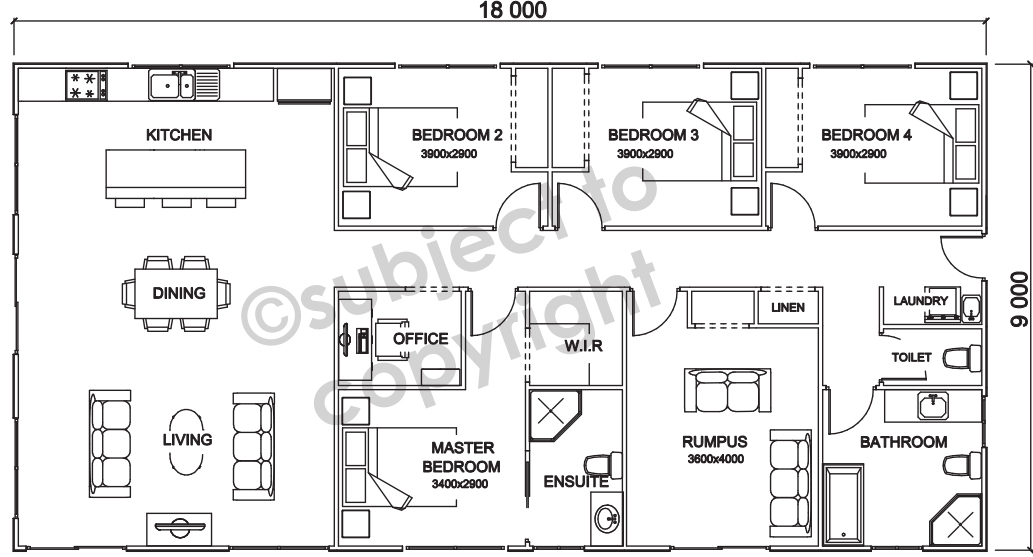
**Derwent** Single Storey 9000mm x 18000mm (162m<sup>2</sup> or 17.5 squares) home.



Gable




Skillion




Available in Flat Pack

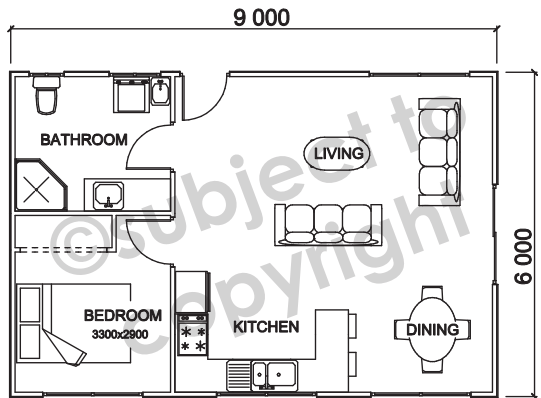
**Gawler** Single Storey 6000mm x 9000mm (54m<sup>2</sup> or 6 squares) home.



Gable

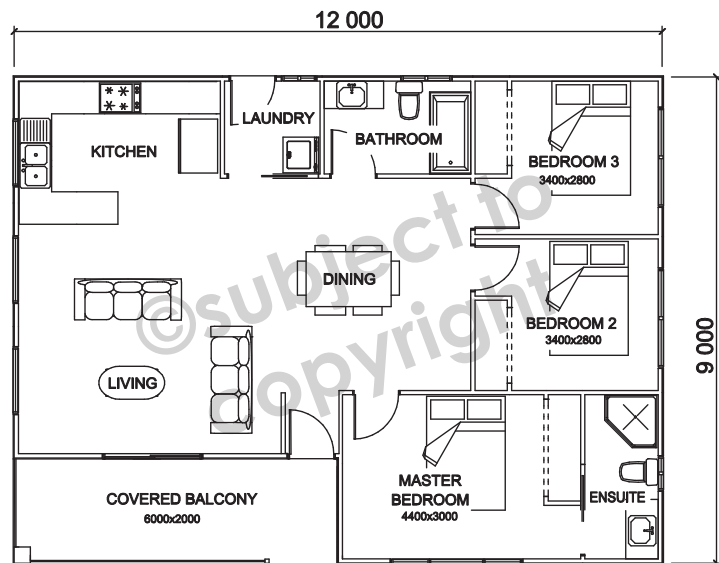


Skillion



Available in Flat Pack

**Dennison S1** Single Storey 9000mm x 12000mm (96m<sup>2</sup> or 10.5 squares) home plus 12m<sup>2</sup> covered balcony.

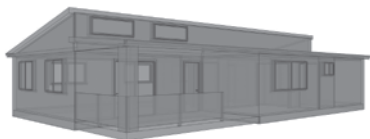
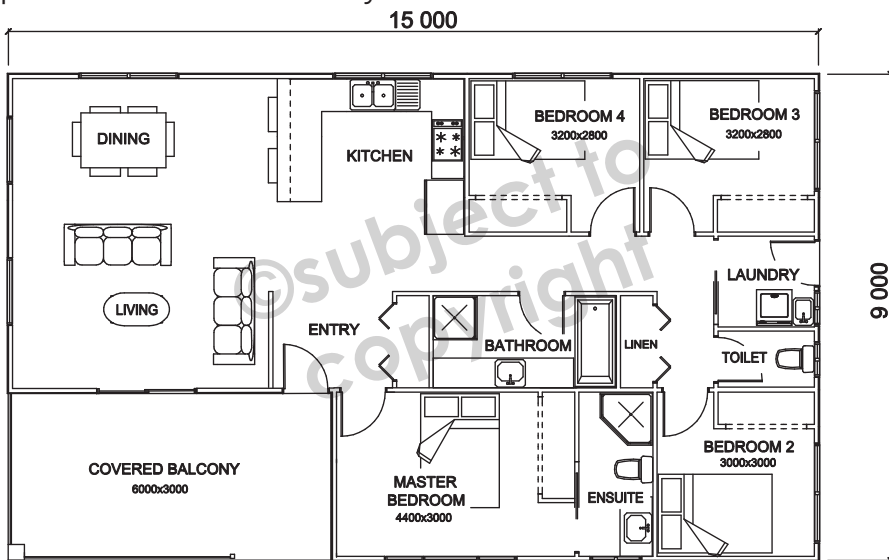


Available in  
Flat Pack



Skillion

**Dennison S2** Single Storey 9000mm x 15000mm (117m<sup>2</sup> or 13 squares) home plus 18m<sup>2</sup> covered balcony.

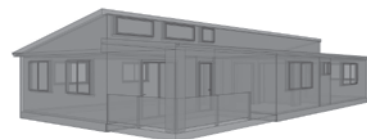


Available in  
Flat Pack



Skillion

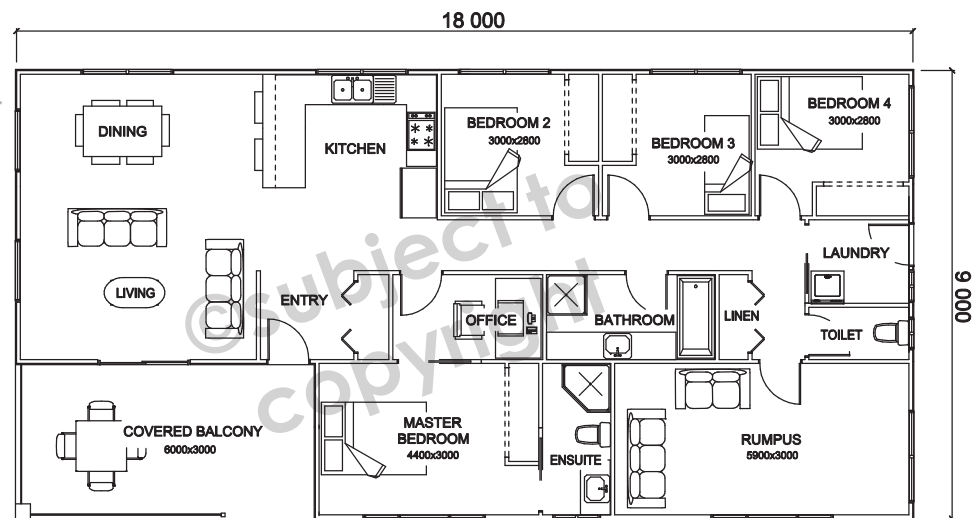
**Dennison S3** Single Storey 9000mm x 18000mm (144m<sup>2</sup> or 15.5 squares) home plus 18m<sup>2</sup> covered balcony.



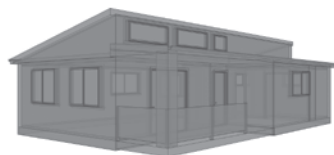
Available in  
Flat Pack



Skillion



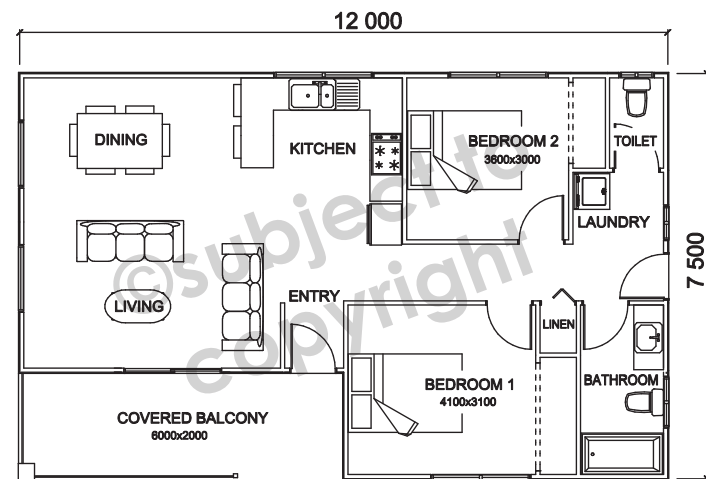
**Mersey S1** Single Storey 7500mm x 12000mm (78m<sup>2</sup> or 8.5 squares) home plus 12m<sup>2</sup> covered balcony.



Available in  
Flat Pack

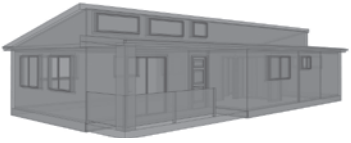
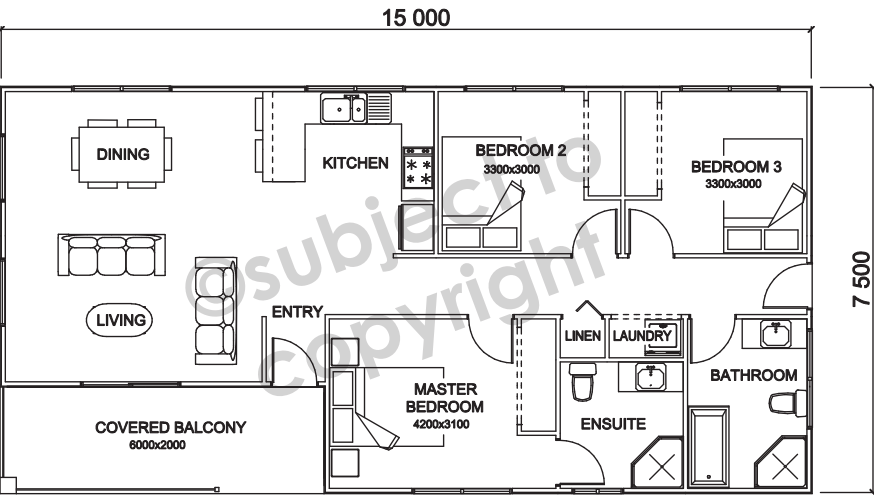


Skillion





**Mersey S2** Single Storey 7500mm x 15000mm (100m<sup>2</sup> or 11 squares) home.  
plus 12m<sup>2</sup> covered balcony.

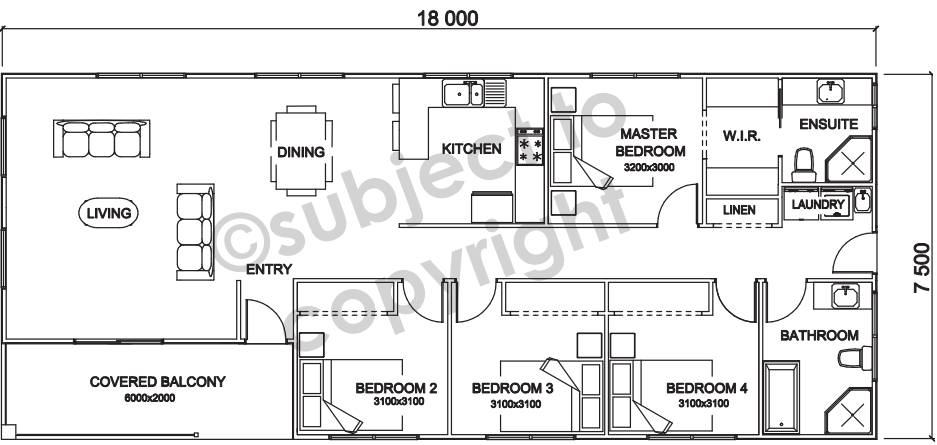


Available in  
Flat Pack



Skillion

**Mersey S3** Single Storey 18000mm x 7500mm (123m<sup>2</sup> or 13.5 squares) home  
plus 12m<sup>2</sup> covered balcony.

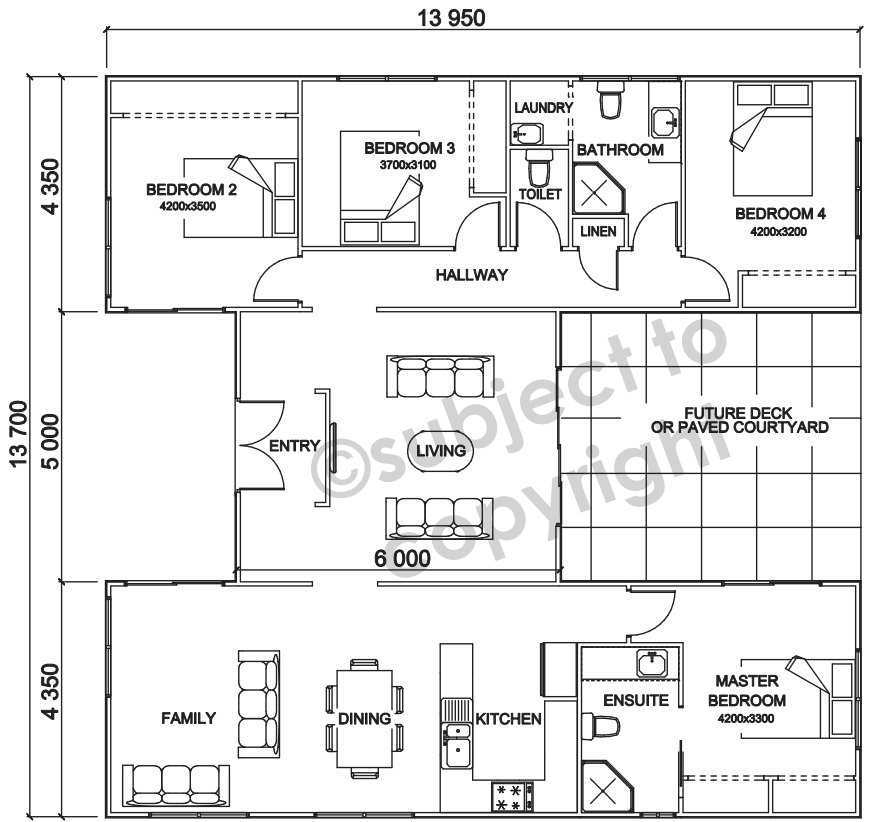


Available in  
Flat Pack



Skillion

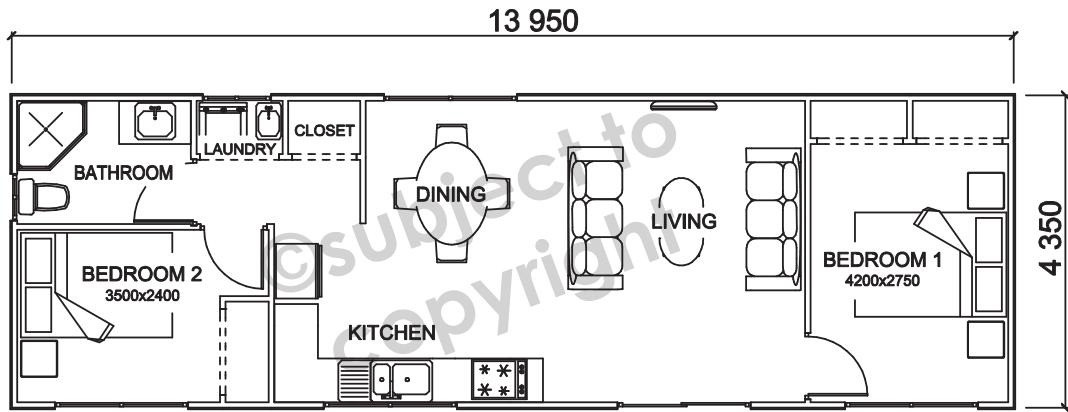
**The Esk** Single Storey 13950mm x 13700mm (151m<sup>2</sup> or 16.8 squares) home.



Available in  
Flat Pack

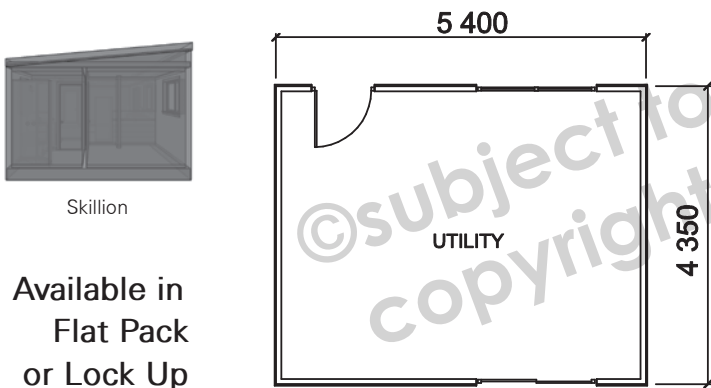


**Challenger 1** Single Storey 4350mm x 13950mm (60.7m<sup>2</sup> or 6.5 squares).



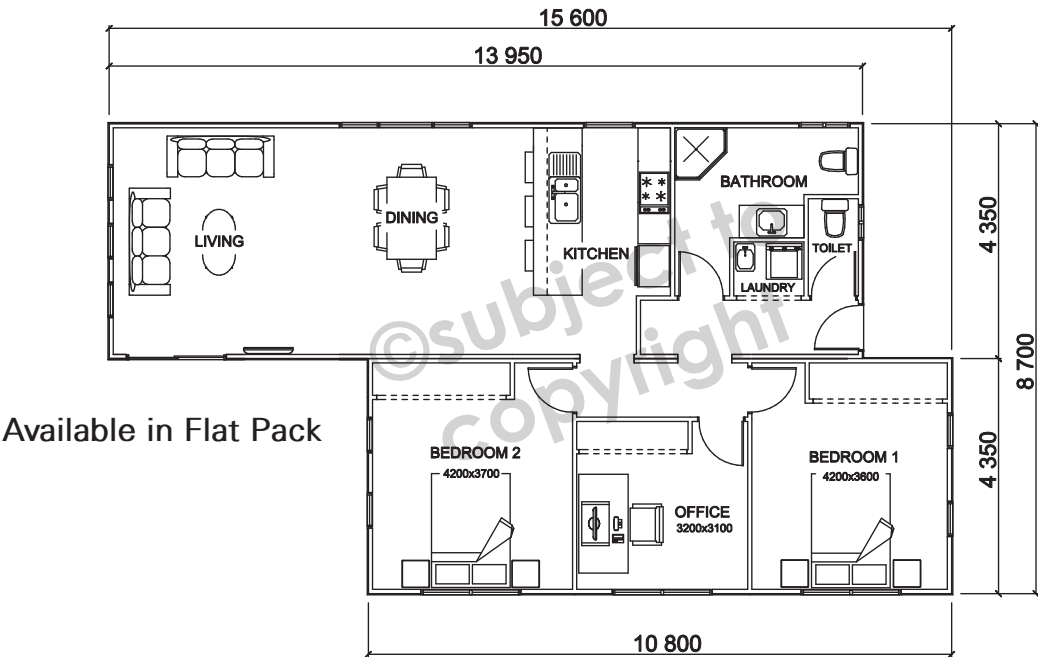
Available in Flat Pack

**Gemini Single Storey**  
4350 x 5400mm (23.5m<sup>2</sup> or 2.53 squares).

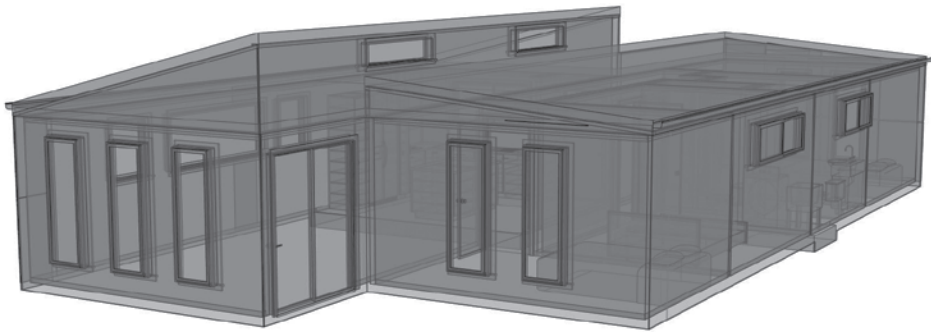


Available in  
Flat Pack  
or Lock Up

**Challenger 2**  
Single Storey 8700mm x 15600mm (121m<sup>2</sup> or 13 squares).

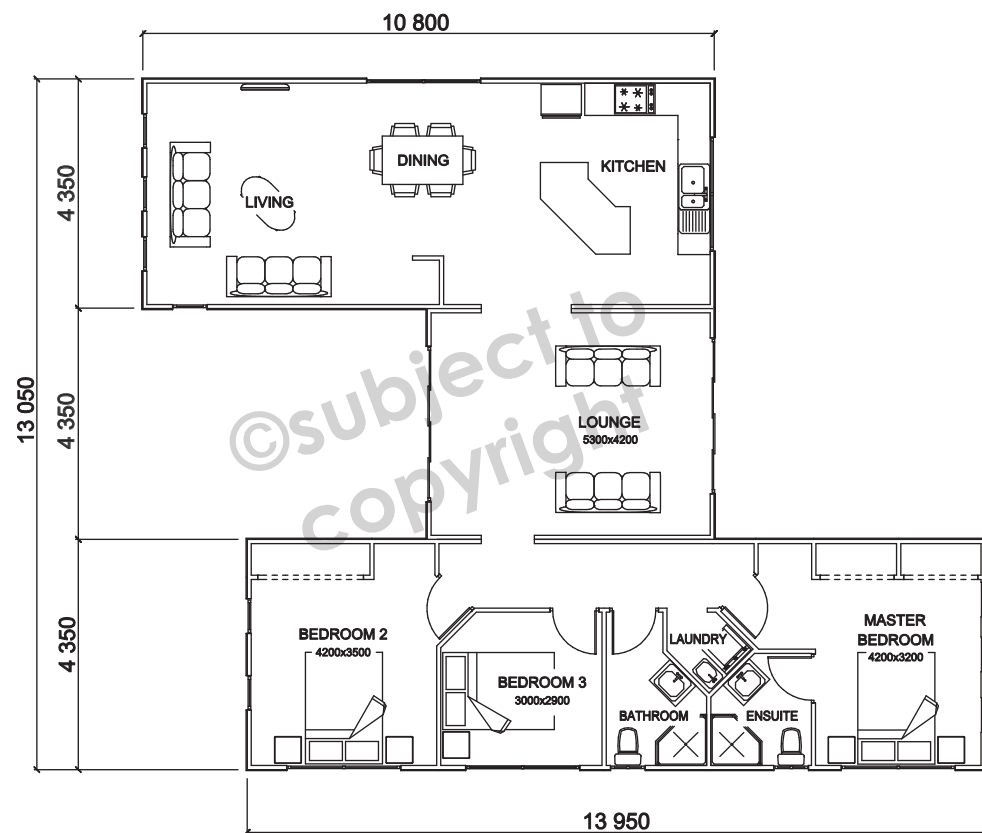
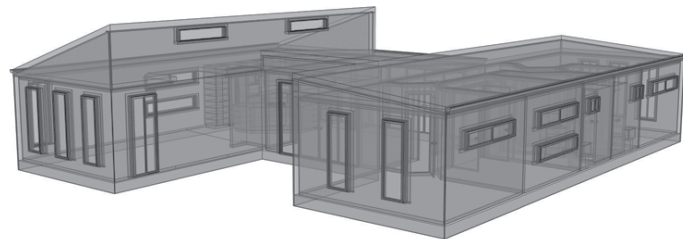


Available in Flat Pack

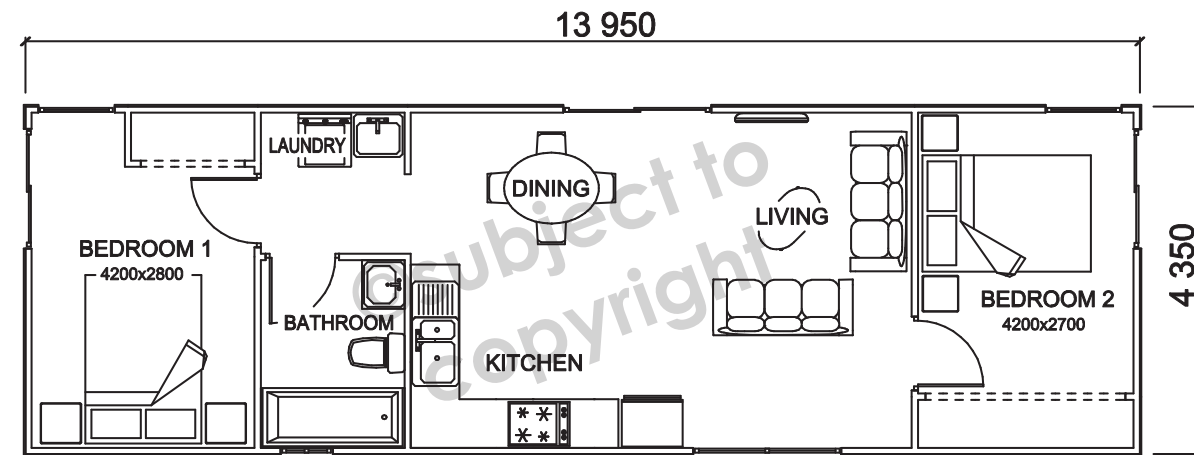


### Challenger 3 Single Storey (131m<sup>2</sup> or 14 squares).

- One 4350 x 13950mm building
- One 4350 x 10800mm building
- One 4350 x 5400mm covered breezeway



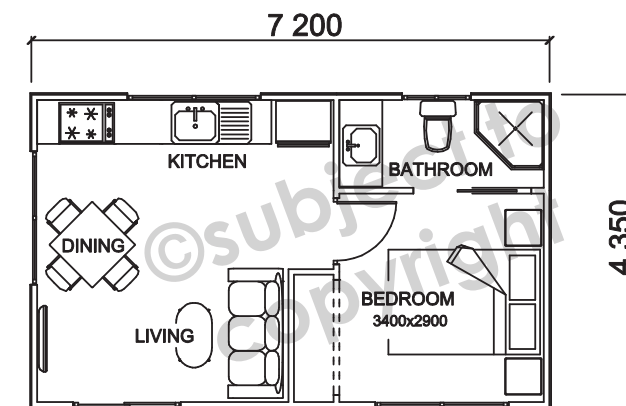
### Endeavour Single Storey 4350mm x 13950mm (60.7m<sup>2</sup> or 6.5 squares).



### Pioneer Single Storey 4350 x 7200mm (31.3m<sup>2</sup> or 3.4 squares).



Skillion



Available in  
Flat Pack  
or Lock Up



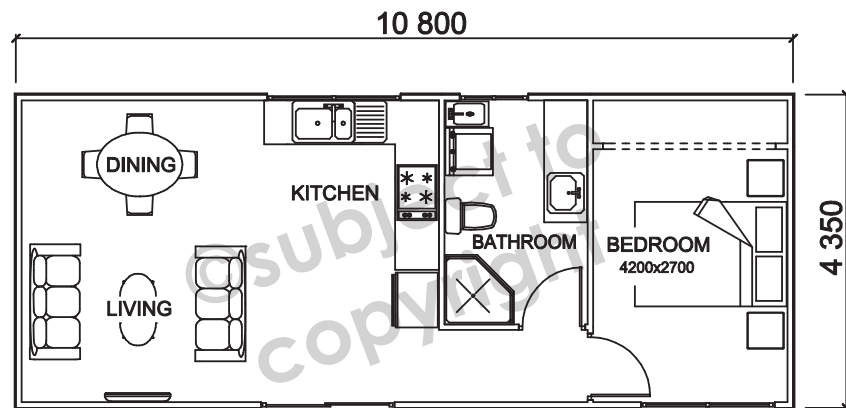


### Apollo Single Storey

4350 x 10800mm (47m<sup>2</sup> or 5 squares).



Skillion



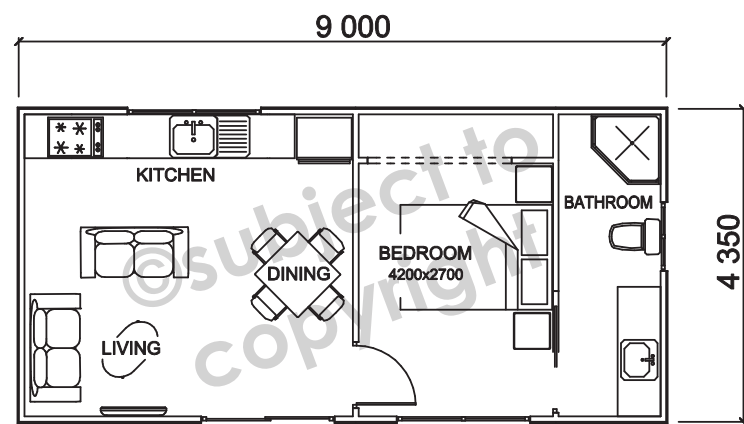
Available in  
Flat Pack  
or Lock Up

### Explorer Single Storey

4350 x 9000mm (39.2m<sup>2</sup> or 4.2 squares).



Skillion

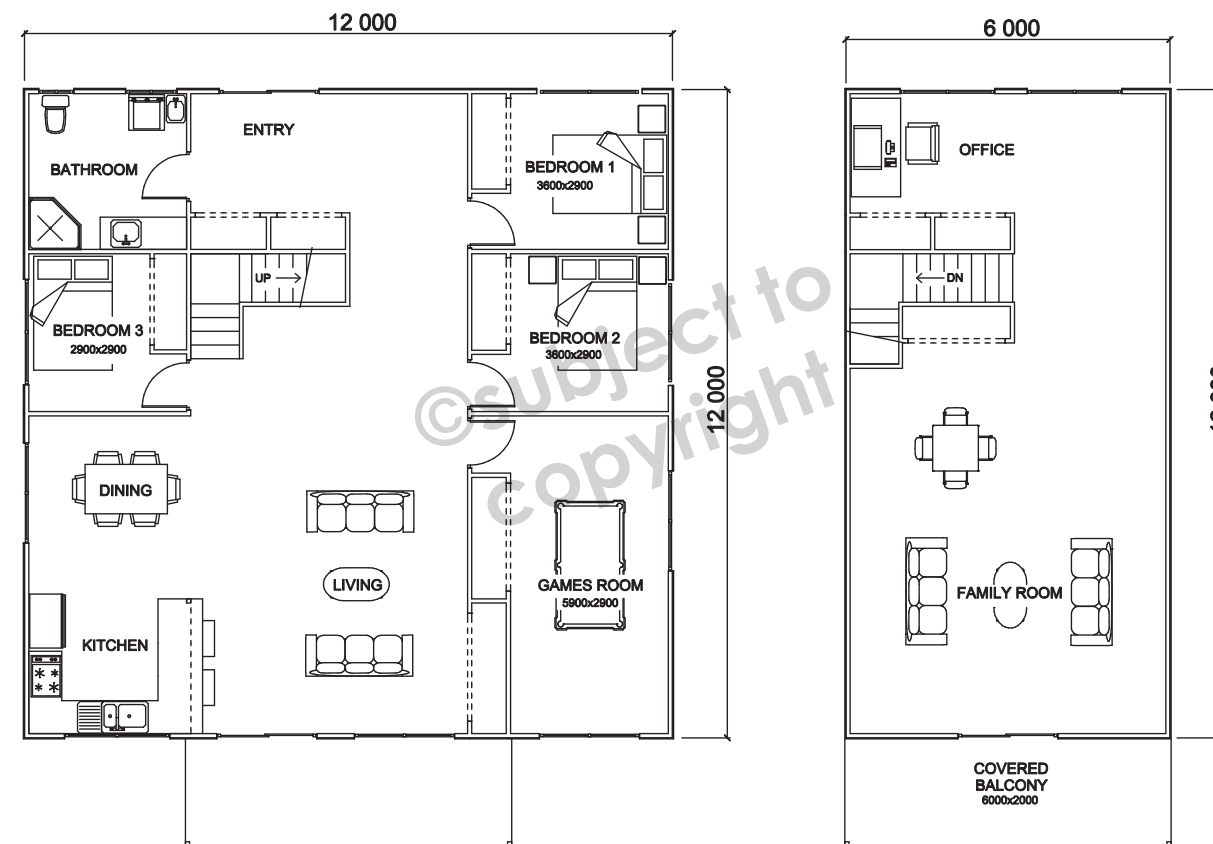


Available in  
Flat Pack  
or Lock Up

### Forester Standard, Gable, or Skillion

Double Storey 12000mm x 12000mm

(216m<sup>2</sup> or 23.5 squares) home plus 12m<sup>2</sup> of upstairs deck.



Available in Flat Pack  
(Standard \*, Gable, or Skillion)

\*Plan varies for standard roof line



Standard\*



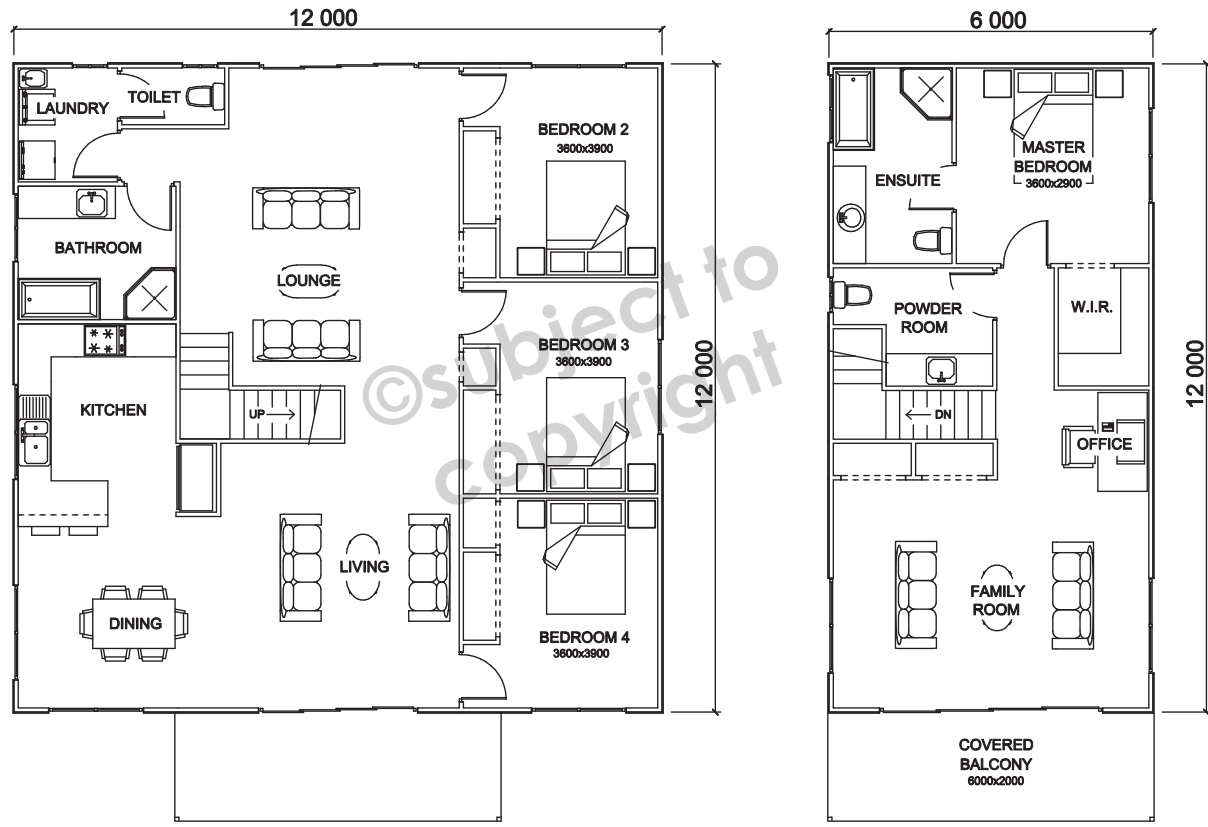
Gable



Skillion



**Forester Option** Gable, or Skillion  
Double Storey 12000mm x 12000mm  
(216m<sup>2</sup> or 23.5 squares) home plus 12m<sup>2</sup> of upstairs deck.



Available in Flat Pack  
(Gable or Skillion)

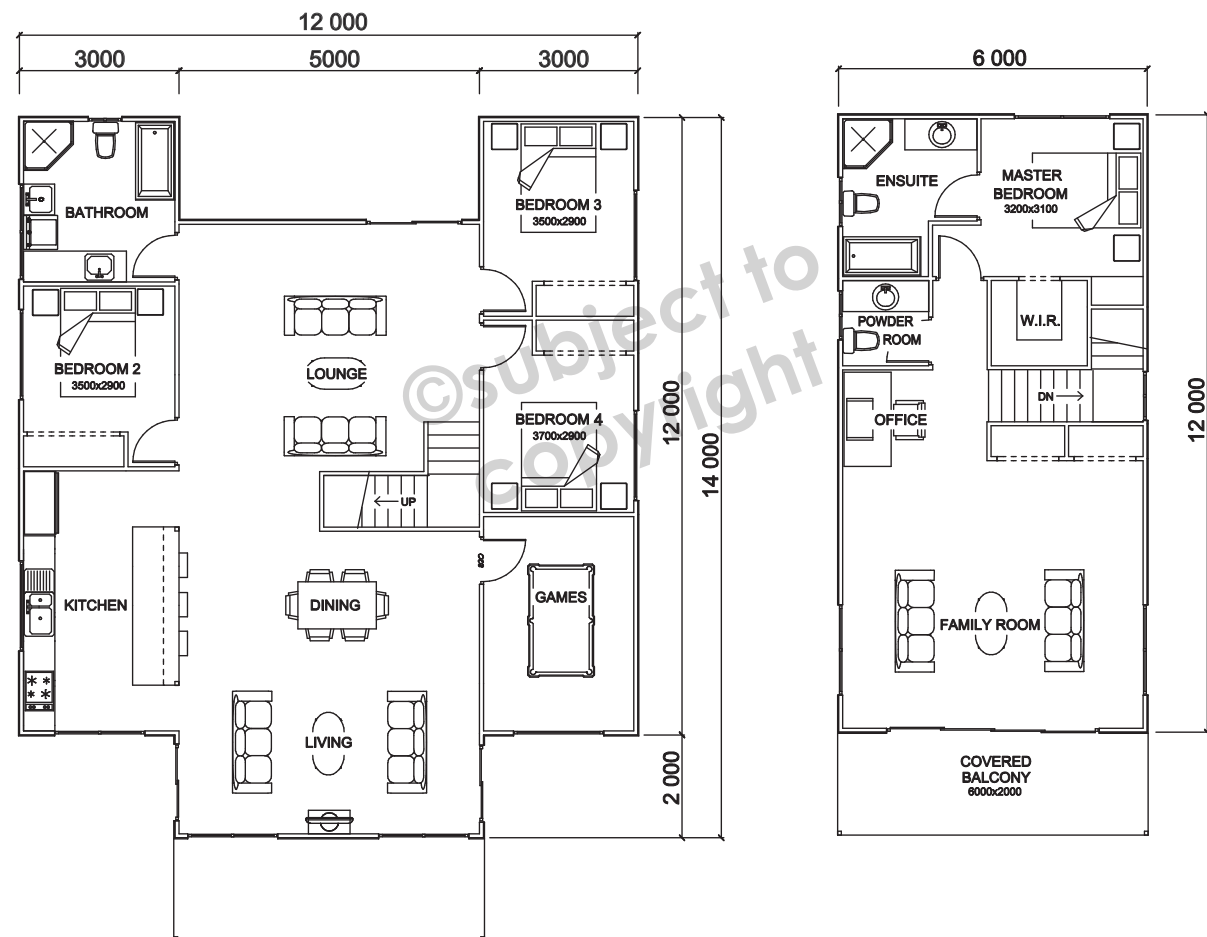


Skillion



Gable

**Forester Extended** Gable or Skillion  
Double Storey 12000mm x 14000mm  
(216m<sup>2</sup> or 23 squares) home plus 12m<sup>2</sup> of upstairs deck.



Available in Flat Pack  
(Gable or Skillion)

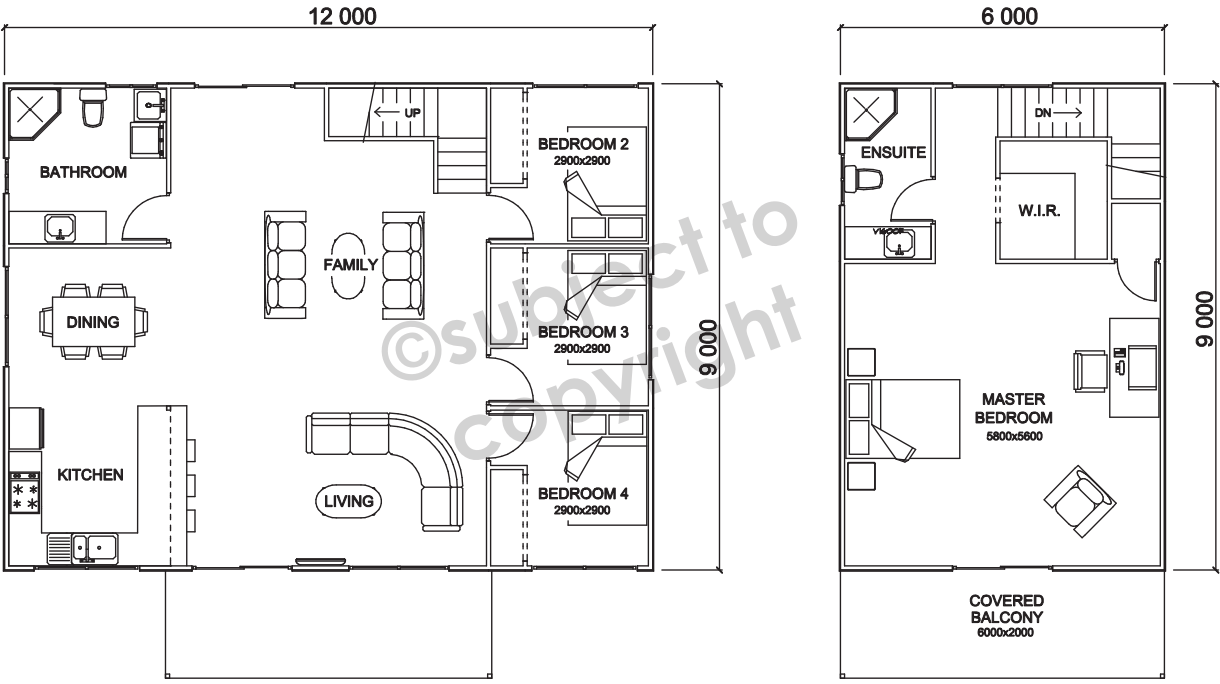


Skillion



Gable

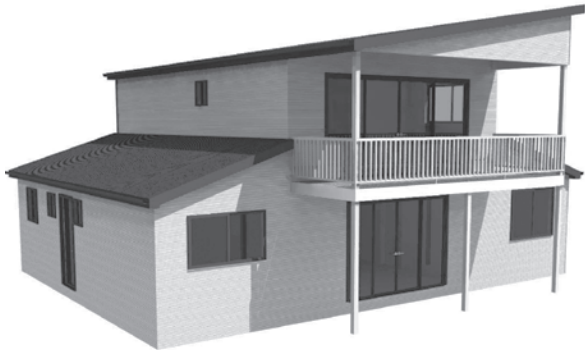
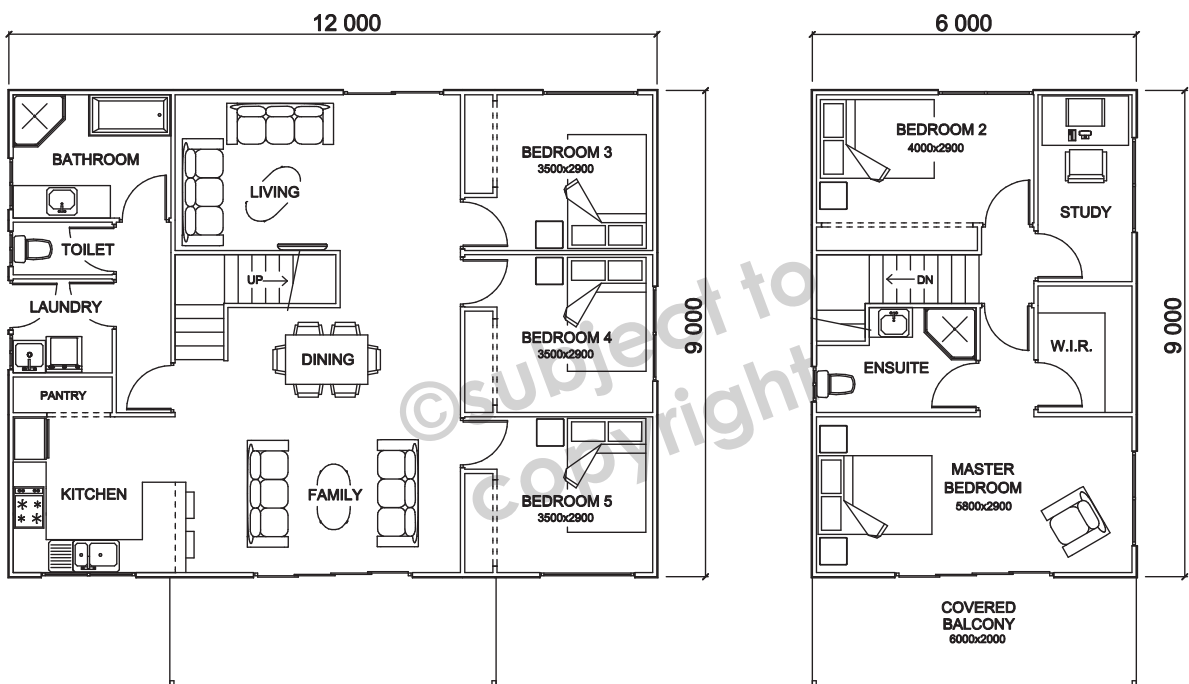
**Prosser Standard, Gable or Skillion**  
Double Storey 9000mm x 12000mm  
(162m<sup>2</sup> or 17.5 squares) home plus 12m<sup>2</sup> of upstairs deck.



Available in Flat Pack  
(Standard \*, Gable or Skillion)

\*Plan varies for standard roof line

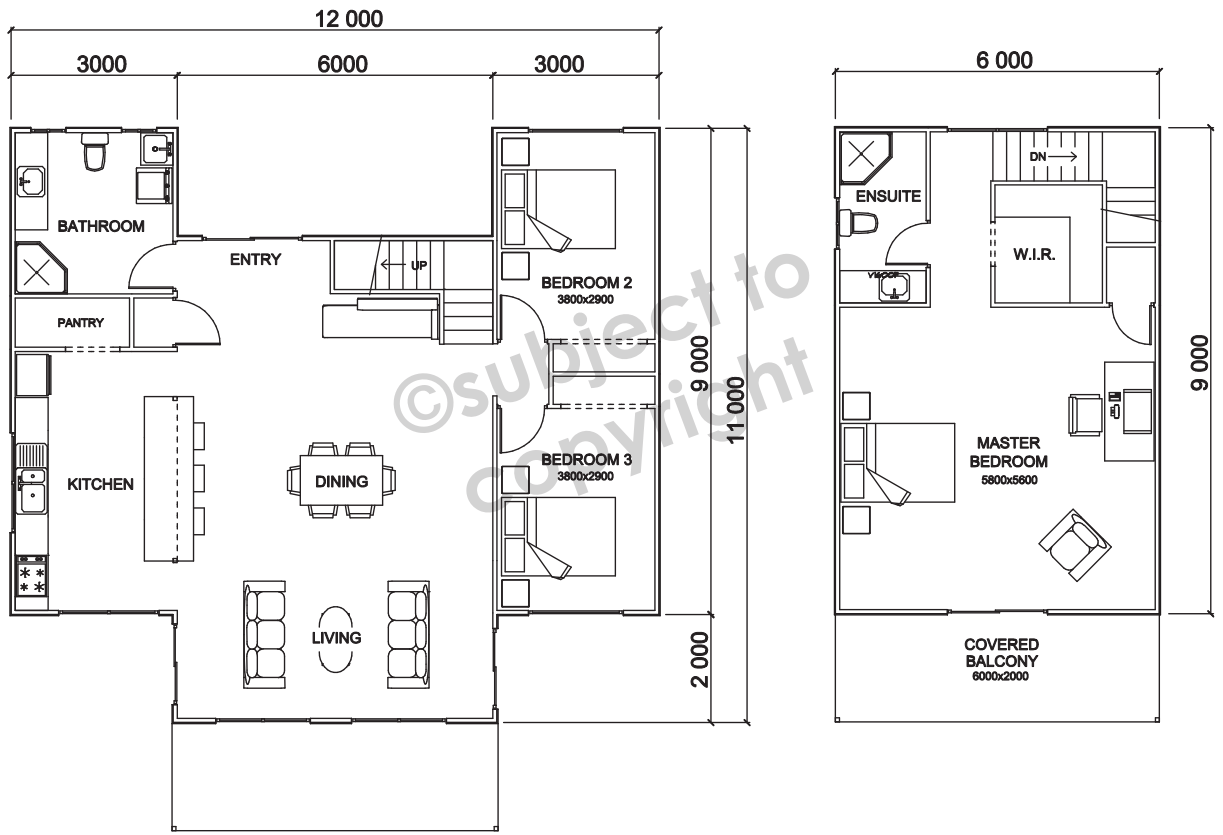
**Prosser Option** Gable or Skillion  
Double Storey 9000mm x 12000mm  
(162m<sup>2</sup> or 17.5 squares) home plus 12m<sup>2</sup> of upstairs deck.



Available in Flat Pack  
(Gable or Skillion)



**Prosser Extended** Gable or Skillion  
Double Storey 11000mm x 12000mm  
(162m<sup>2</sup> or 17.5 squares) home plus 12m<sup>2</sup> of upstairs deck.



Available in Flat Pack  
(Gable or Skillion)

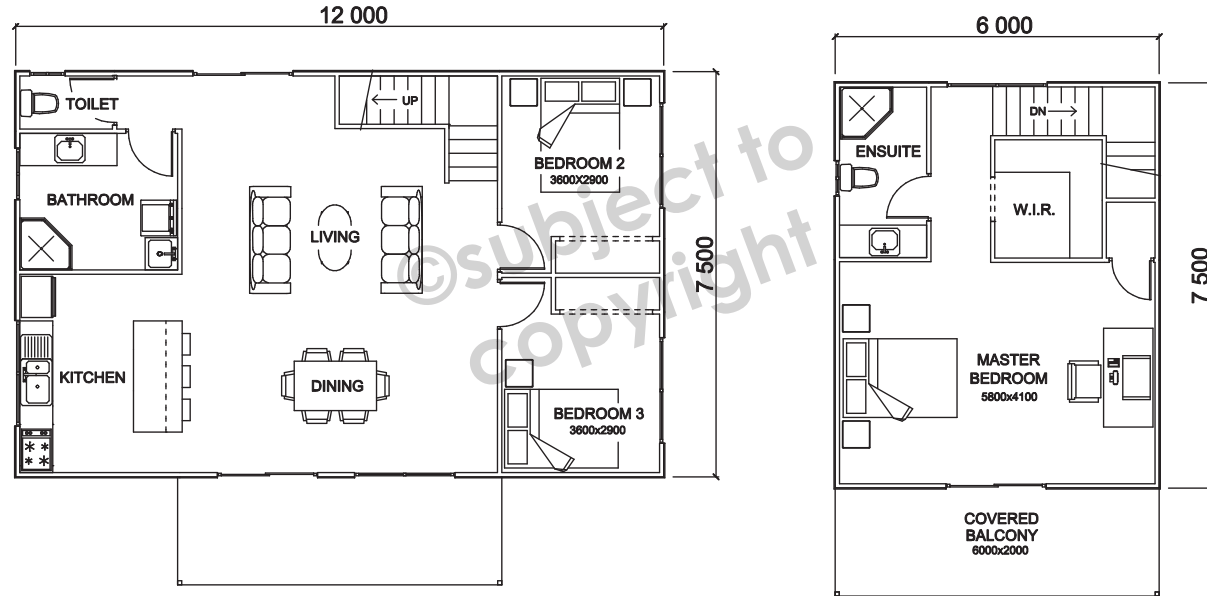


Skillion



Gable

**Horton** Gable or Skillion  
Double Storey 7500mm x 12000mm  
(135m<sup>2</sup> or 14.5 squares) home plus 12m<sup>2</sup> of upstairs deck.



Available in Flat Pack  
(Gable or Skillion)

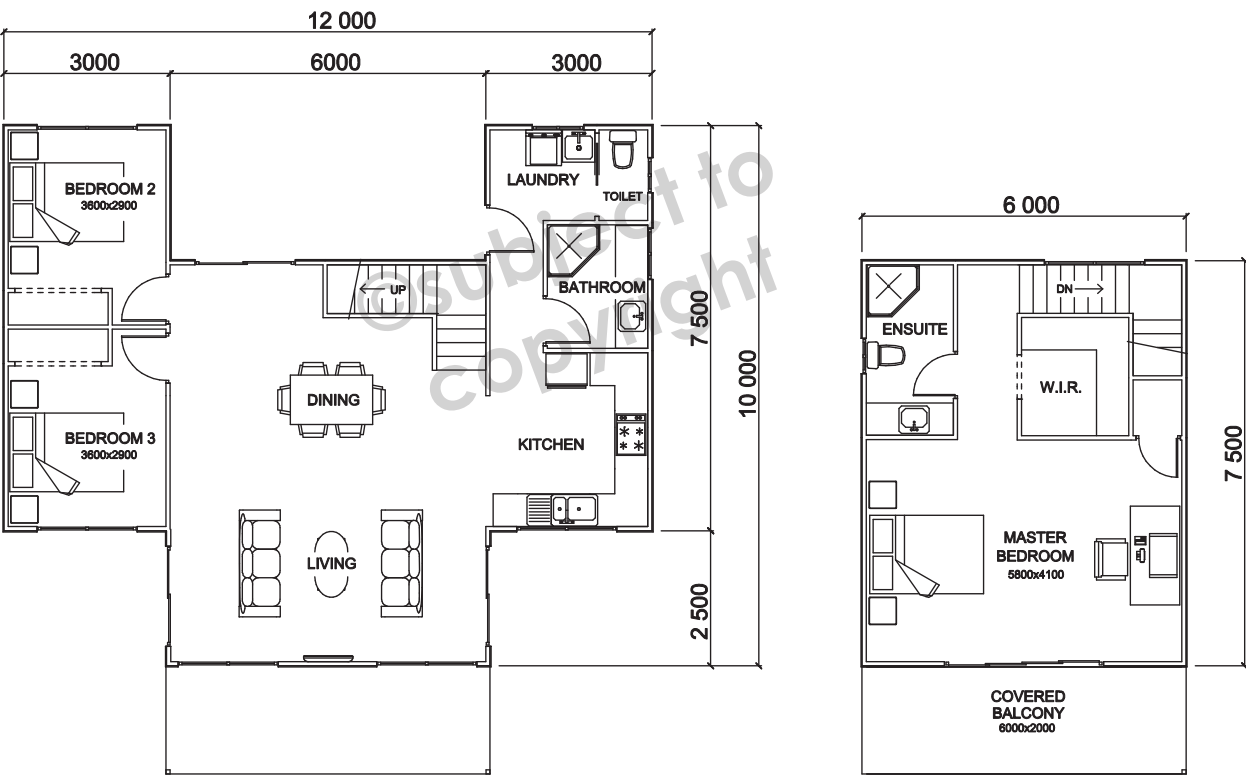


Skillion



Gable

**Horton Extended** Gable or Skillion  
Double Storey 10000mm x 12000mm  
(135m<sup>2</sup> or 14.5 squares) home plus 12m<sup>2</sup> of upstairs deck.



Available in Flat Pack  
(Gable or Skillion)

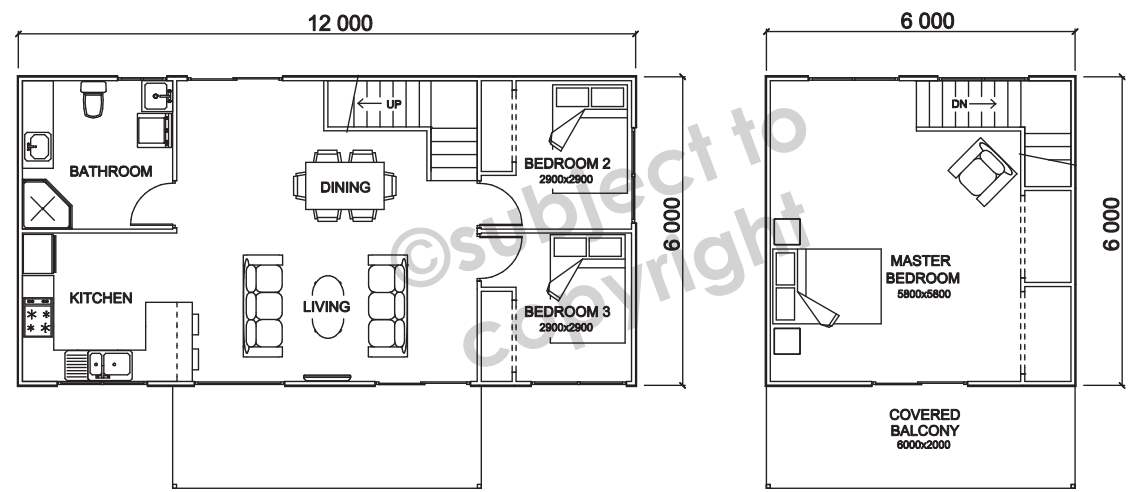


Skillion



Gable

**Rubicon** Standard, Gable or Skillion  
Double Storey 6000mm x 12000mm  
(108m<sup>2</sup> or 11.5 squares) home plus 12m<sup>2</sup> of upstairs deck.



Available in Flat Pack  
(Standard \*, Gable or Skillion)  
*\*Plan varies for standard roof line*



Standard\*



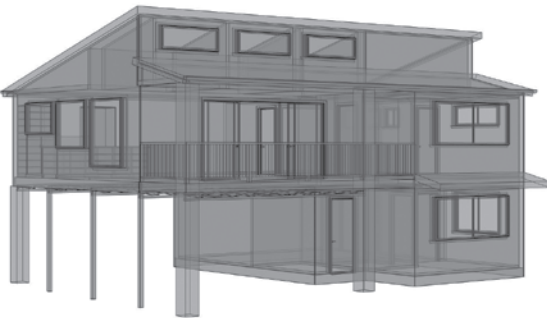
Skillion



Gable



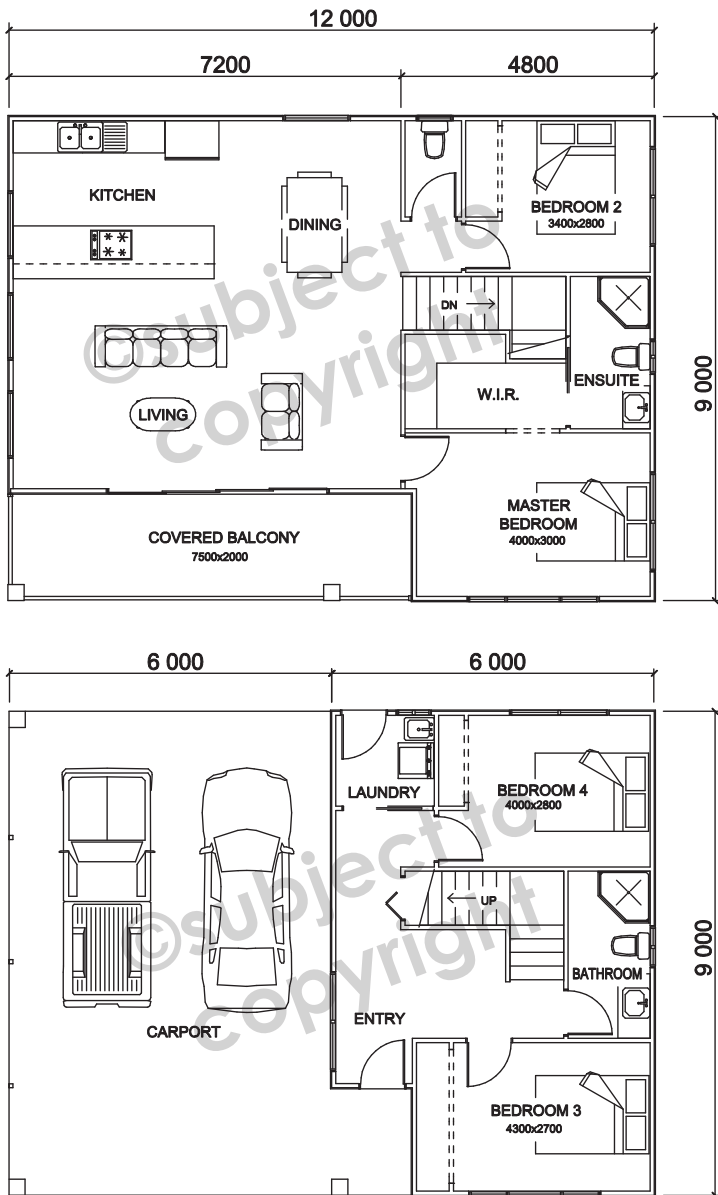
**Dennison D1** Double Storey 9000mm x 12000mm  
(144m<sup>2</sup> or 15.5 squares) home plus 15m<sup>2</sup> covered balcony and 57m<sup>2</sup> carport.



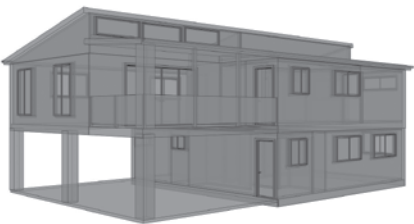
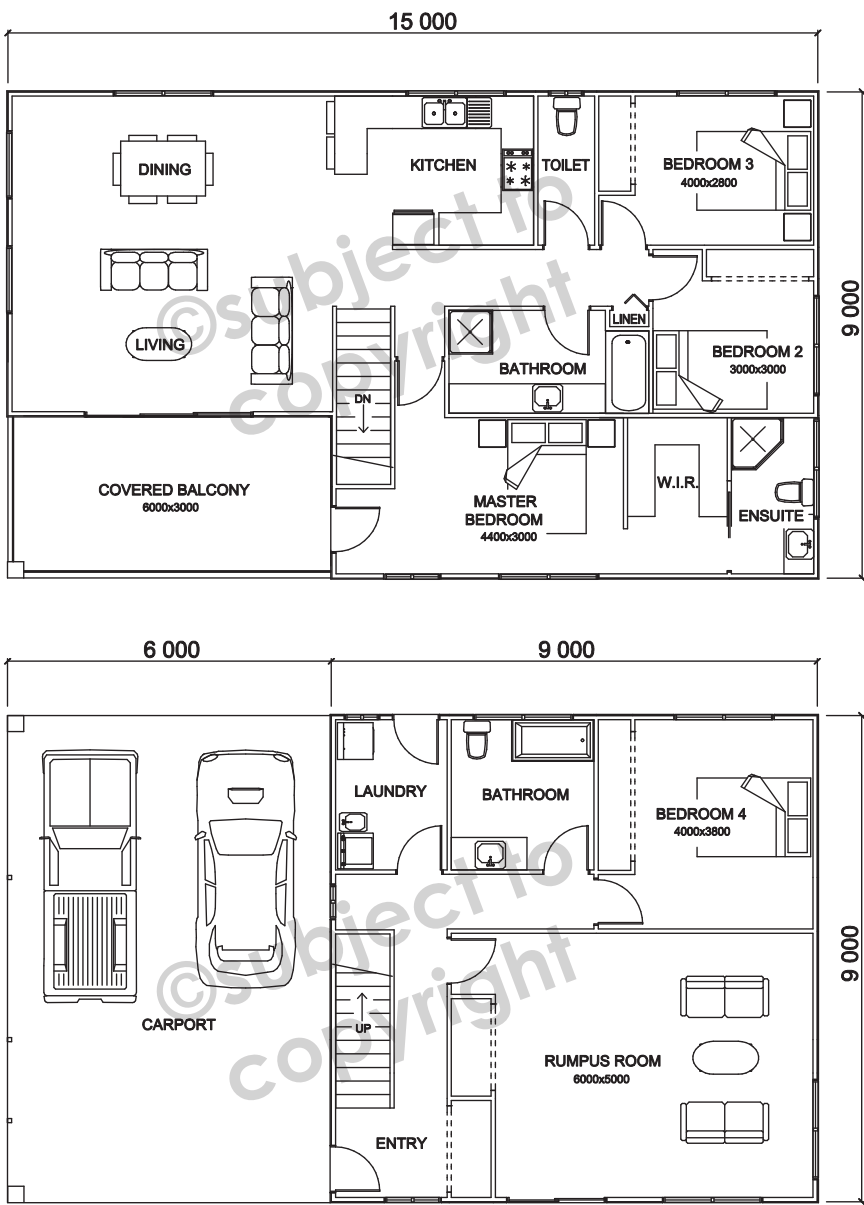
Available in  
Flat Pack



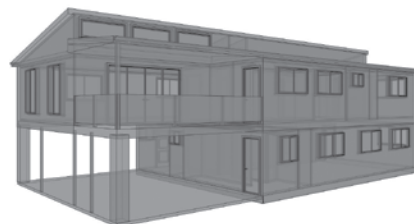
Skillion



**Dennison D2** Double Storey 9000mm x 15000mm  
(198m<sup>2</sup> or 21.5 squares) home plus 18m<sup>2</sup> covered balcony and 54 m<sup>2</sup> carport.



Dennison D2



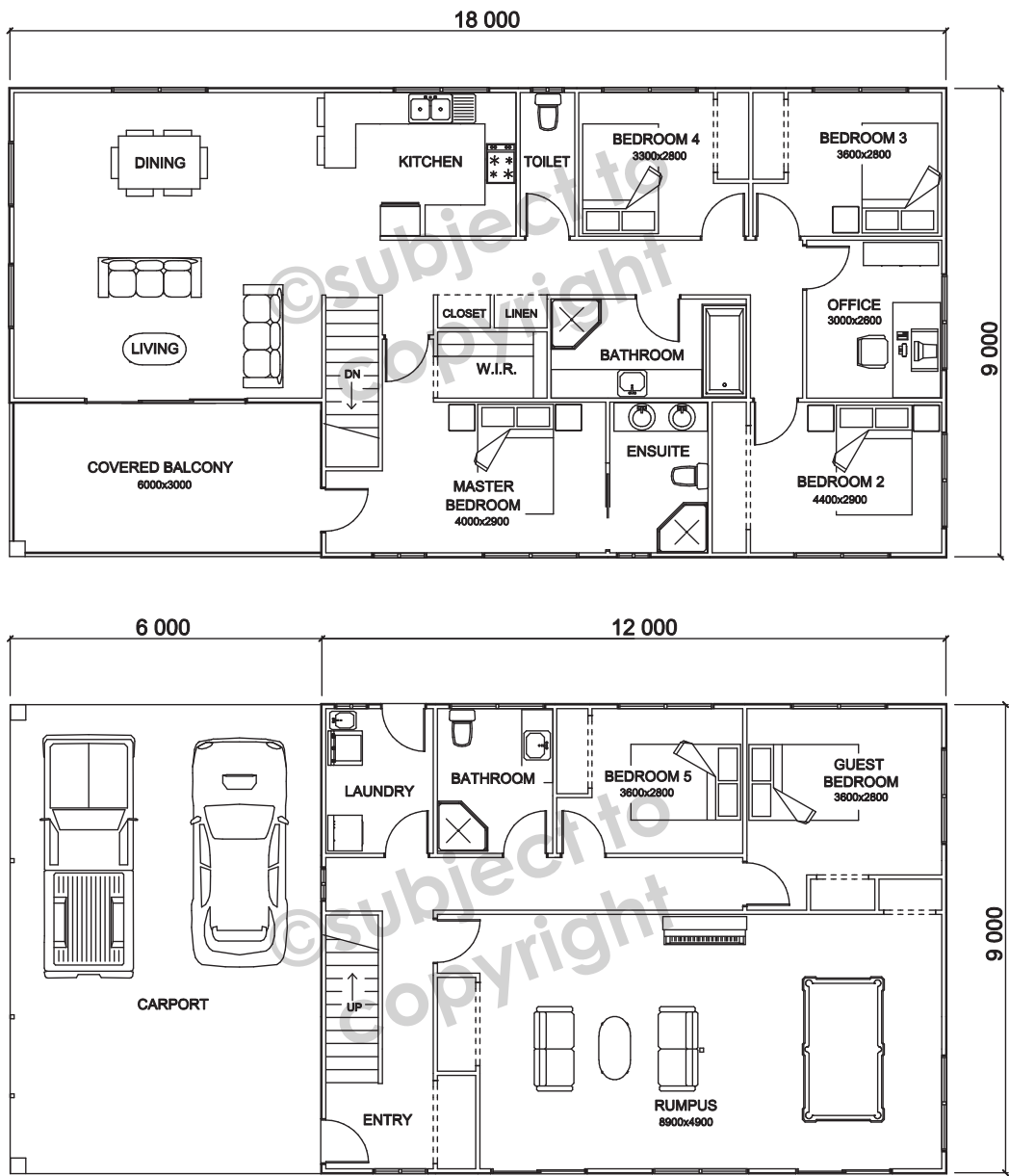
Dennison D3

Available in  
Flat Pack



Skillion

**Dennison D3** Double Storey 9000mm x 18000mm  
(252m<sup>2</sup> or 27 squares) home plus 18m<sup>2</sup> covered balcony and 54 m<sup>2</sup> carport.

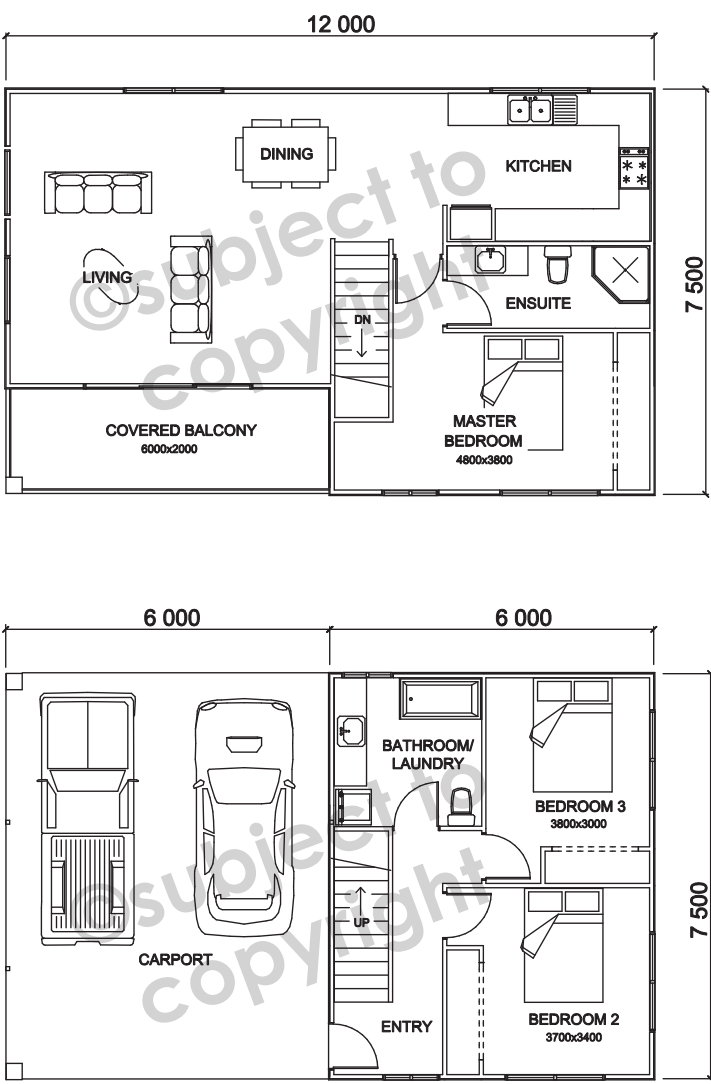


Available in  
Flat Pack



Skillion

**Mersey D1** Double Storey 7500mm x 12000mm  
(123m<sup>2</sup> or 13.5 squares) home plus 12m<sup>2</sup> covered balcony and 45m<sup>2</sup> carport.



Mersey D1

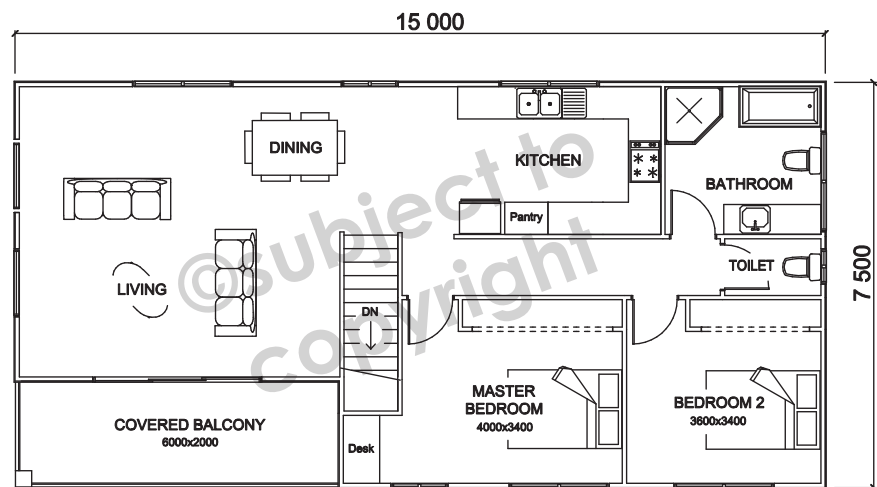
Mersey D2

Available in  
Flat Pack



Skillion

**Mersey D2** Double Storey 7500mm x 15000mm  
(168m<sup>2</sup> or 18 squares) home plus 12m<sup>2</sup> covered balcony and 45m<sup>2</sup> carport.

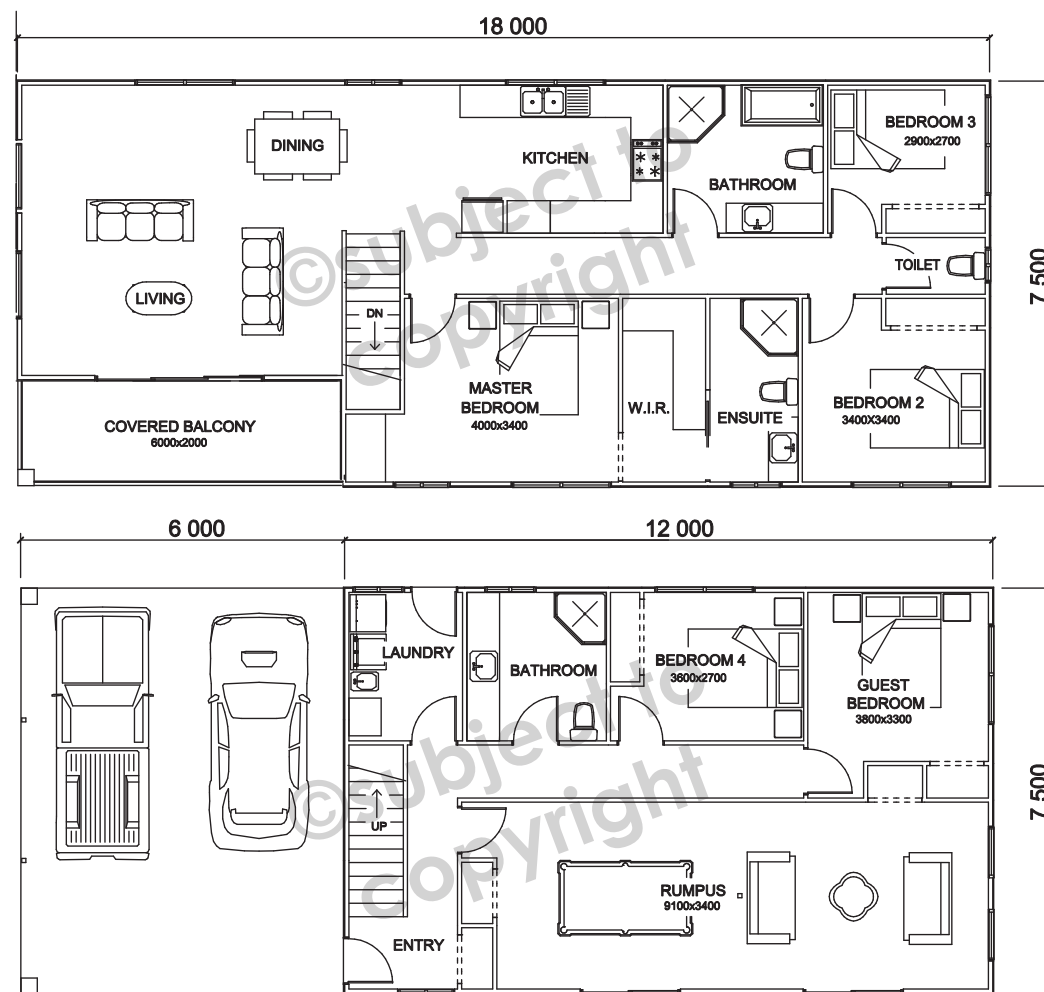


Available in  
Flat Pack

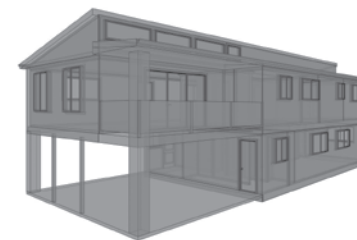


Skillion

**Mersey D3** Double Storey 7500mm x 18000mm  
(213m<sup>2</sup> or 23 squares) home plus 12m<sup>2</sup> covered balcony and 45m<sup>2</sup> carport.



Available in  
Flat Pack



Skillion

- Double Storey Homes
- Single Storey Homes
- Single Garages
- Double Garages
- Triple Garages
- Lean To
- Lockports
- Carports
- Barns and Machinery Sheds
- Warehouses

131 Albert Road, Moonah TAS 7009

Phone: (03) 6278 1510

Email: [sales@statewideconstructions.com.au](mailto:sales@statewideconstructions.com.au)



**STATEWIDE**  
constructions

**[www.statewideconstructions.com.au](http://www.statewideconstructions.com.au)**

Members of The Housing Industry Association